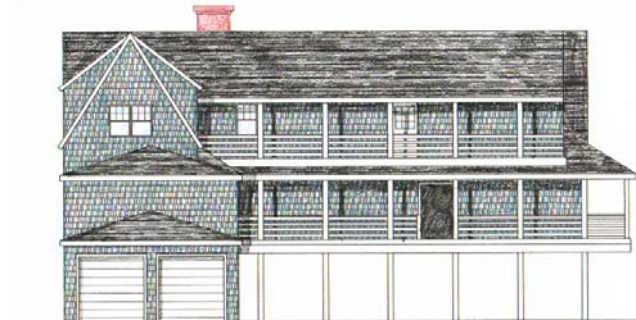
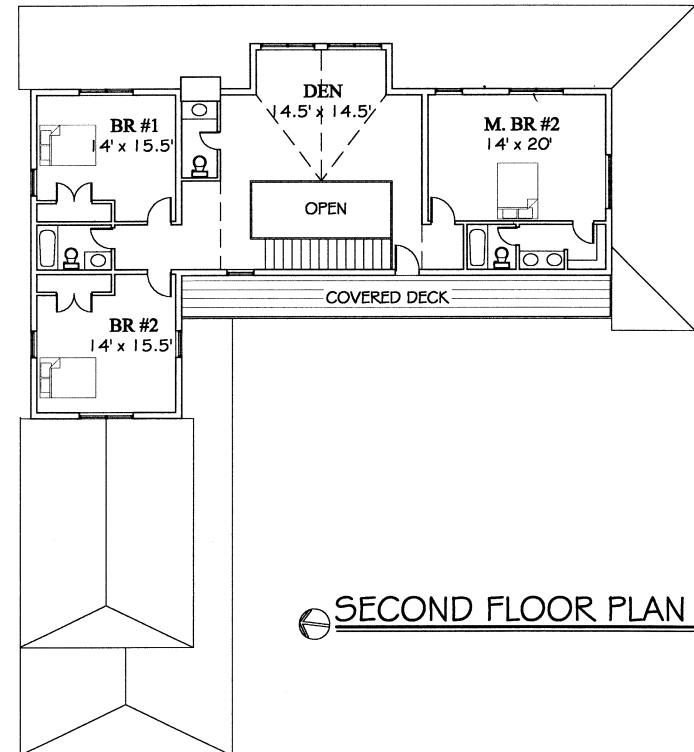
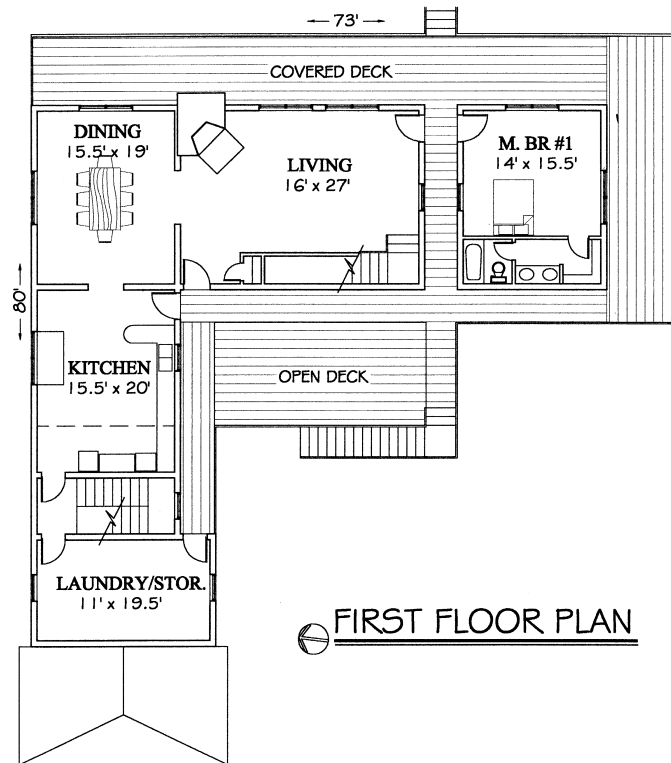


The Nags Head

2 MBR, 2 BR, Den, 3.5 Bath
3,500 sf (heated); 1,700 sf decks

Edmond P. Virgili, R.A. - Architect

Copyright 2001



Front Elevation



Beach Elevation

A cottage in the traditional "Nags Head" style, similar to the cottages across from Jockey's Ridge. This style includes a simple, single (one room wide) floor plan, usually "L" shaped, with the point of the "L" facing northeast. Also included are the broad porches that normally surround three sides of the cottage.